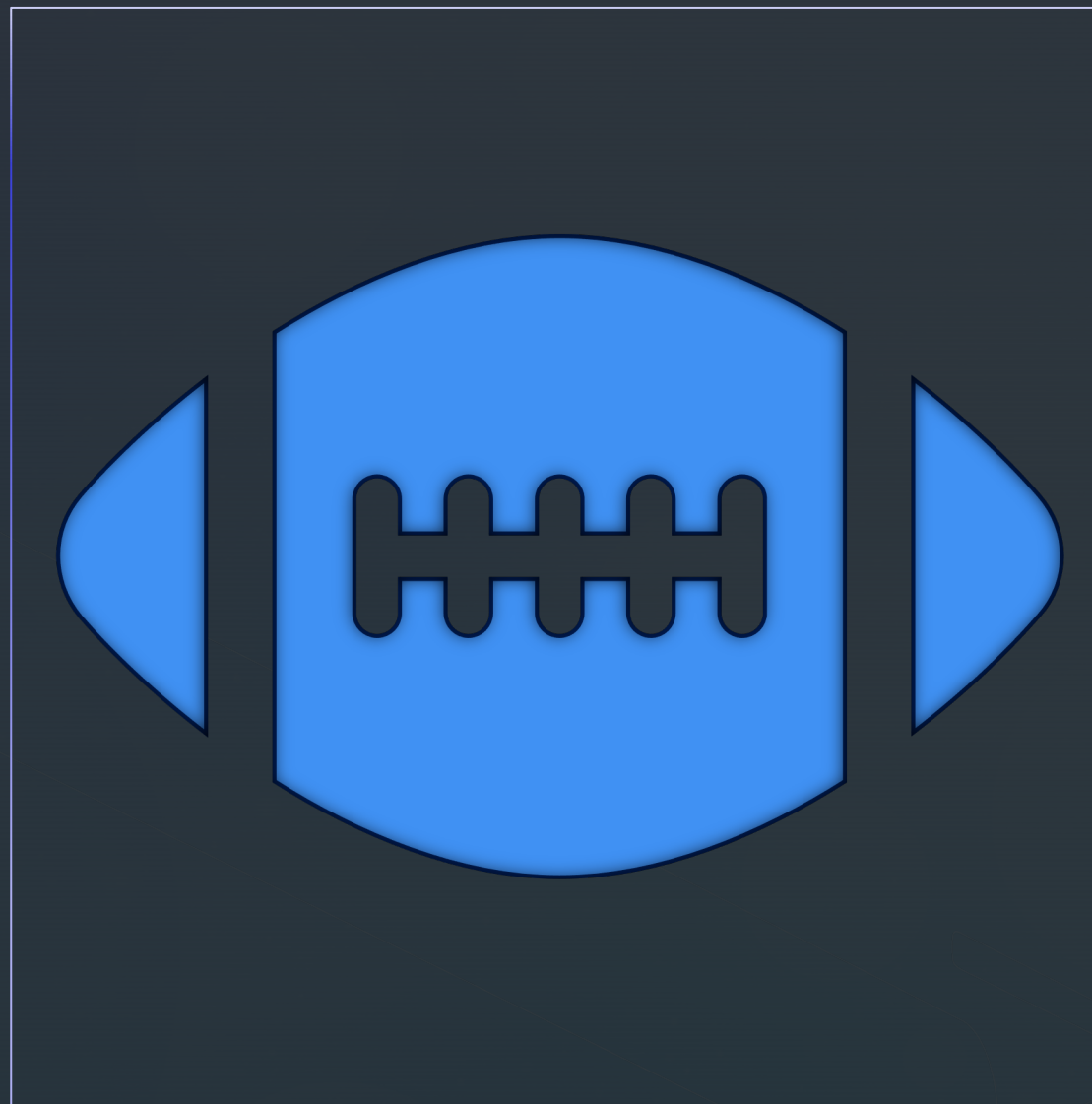


Concert and Symphonic Band

SRMS Band 2022-2023

Football Band





SHOAL RIVER M.S. FOOTBALL BAND 🎵 SCHEDULE 🎵

25
AUG

MEIGS MS
HOME GAME
Drop-off 5:15
Kick-off 6:30

06
OCT

DAVIDSON MS
AWAY GAME @ CRESTVIEW HS
Drop-off 5:15
Kick-off 6:30

21
SEP

DESTIN MS
HOME GAME
Drop-off 5:15
Kick-off 6:30

13
OCT

PLAYOFFS
TENTATIVELY ON CALENDAR
Info coming if we
qualify and are
the home team

28
SEP

MEIGS MS
HOME GAME
Drop-off 5:15
Kick-off 6:30

20
OCT

CHAMPIONSHIP
TENTATIVELY ON CALENDAR
Info coming if we
qualify and are
the home team



Football Band Dress Code

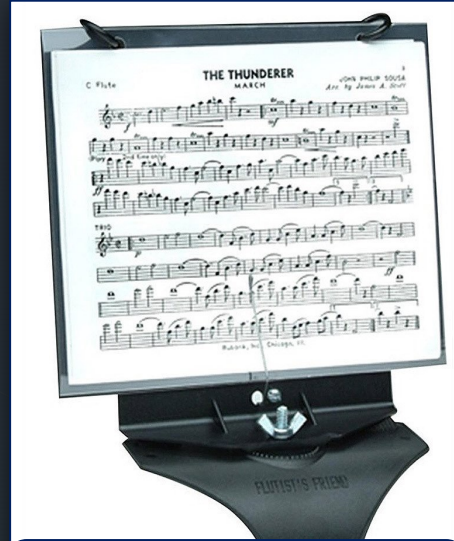
- Band Polo Shirt
 - Tucked in
- Black Pants
 - NO rips/holes
- Black Sneakers
- Black Socks
- Optional: Black Belt



Marching Lyres and Flip Folders



Trombone



Flute, Oboe,
French Horn



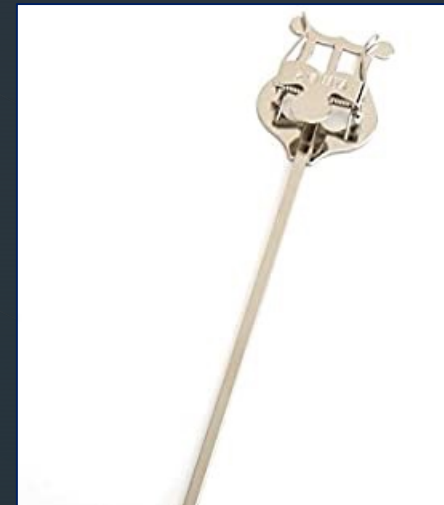
Trumpet



Clarinet



Saxophone



Euphonium

Band Members in Football, Cheerleading, or Dance Team

- **Let us know** so that we can discuss procedures for getting your instrument ready on game days
- We have a system to bring out the instruments so you can **participate in our half-time performance and get back** to the team quickly



Parades

- **Veteran's Day March-Over to Riverside**
 - During School Hours
 - Date TBA
- **Crestview Christmas Parade**
 - December 3rd @ 5:30 PM
 - Downtown Crestview



Forms to Fill Out

1. Contact Form

- Online form preferred
- can do handwritten if you need

2. Permission Slip for On/Off-Campus School Activities

- Needs to be notarized
- Lasts for field trips throughout the whole school year

3. Student Image/Video Release

- Needed for us to photograph/video tape performances throughout the year

4. School Instrument User Agreement

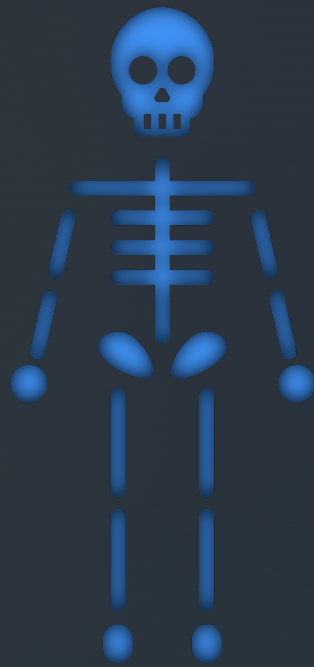
- *only if using a school instrument*



Nightmare Before Christmas Concert

Nov. 15th, 2022





Costume Dress Code

Choose between spooky or festive...or a mix of both!

- Keep it **school-appropriate**
- No blood, gore, or weapons
- You must be able to **clearly see** the conductor and **comfortably play** your instrument



Awesome Past Spooktacular Costumes!



Have Ideas to Decorate?

- We would really like to add some fun **decorations!**
- If you would like to help decorate, **please reach out** and come to the **parent volunteer meetings** to discuss! Meeting dates are on the calendar.



Music Performance Assessment (MPA)



What is MPA?

- March 7-9, 2023 (TBA)
 - **We are planning to take both bands to perform this year!**
- MPA is an annual assessment for school music programs
- The band's performance is evaluated live by **three judges**
- There is a second **sight-reading** performance using music the students have never seen or heard before
- Exact dates and times will be assigned by FBA in February



Preparation

- In February, we will hold **after-school sectionals** from 3-4pm, allowing us to work on a more individual basis
 - Each section stays once a week for 3 weeks (dates on calendar)
- Symphonic Band **Pre-MPA Boot Camp** will be on Saturday, February 25th from 2pm to 5pm.
 - Last year, we worked with Dr. Steve Kelly from Florida State University, and this year, we are excited to welcome **Professor Jay Watkins** from the University of Florida!



Solo and
Ensemble
Festival
(S&E)



What is Solo and Ensemble?



- **Saturday, February 11, 2023**
- Solo & Ensemble is a music festival that takes place in each District of Florida
- Students are given the opportunity to perform pieces of musical literature that require **playing alone or in smaller groups**

Why Participate?

- Playing alone or in small ensembles (“chamber groups”) pushes students to develop their **individual musicianship**, as these pieces typically have one person play each part.
- Get some **technique help** and a **mini-lesson** from certified judges, who are often music teachers assigned to their main instruments
- **More important skills:** teamwork, listening, goal-setting, responsibility, professionalism, etc.!



Signing Up to Perform in Solo and Ensemble



- **Registration** for Solo and Ensemble is due by **December 20th, 2022**
- We will help in choosing music and preparing, but one of the best parts of this event is that students make this a project of their own!
- It costs **\$10 per student per performance**, which pays for the judge and the medals. This amount is nonrefundable should the student fail to perform for any reason.

All-County
&
All-State



Why Participate?

- Honor bands give students an opportunity to meet and perform with other top-level middle school musicians in the county/state
- Guest conductors introduce the students to **new music and ideas**
- Going through the audition process teaches students **goal-setting, interview skills,** and **facing fears**
 - Even when students don't make the band, they improve significantly as individual players



Audition Process

- **Requirements:**
 - Chromatic Scale
 - 7 Major Scales (memorized) in 2 minutes
 - Prepared Music Exercise
 - Sight-Reading
- Each instrument has **one or two judges**. Show up ahead of your assigned time to warm up in the cafeteria and find your room. You'll play your audition, and then you are free to go home and get some ice cream!

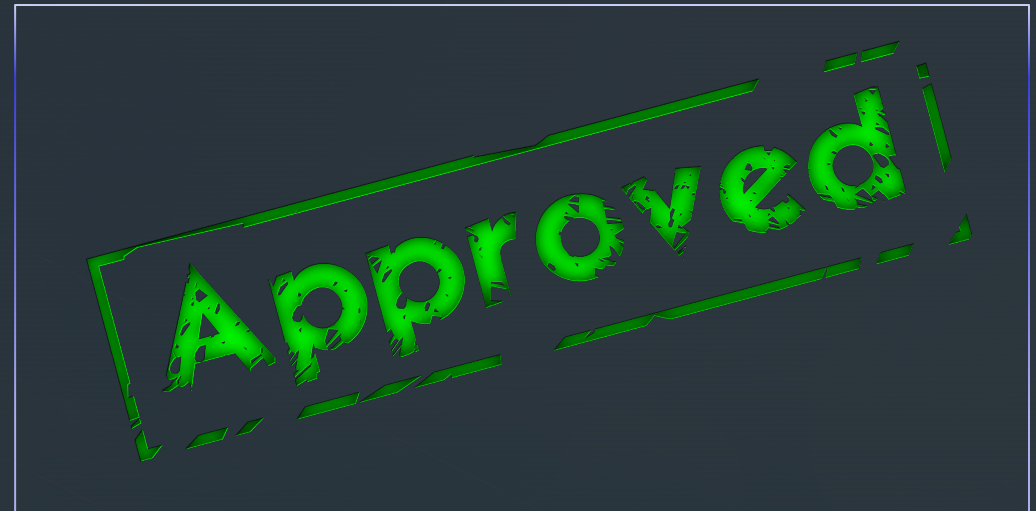


Parent Volunteers



Volunteer Approval Process

- All volunteers are vetted to ensure the students' safety
- Training clearance **lasts one calendar year**. You should receive a reminder before an old application expires.
- The **online application** is linked on our website under the "Volunteers" page
- On our page, you'll also find the **volunteer handbook** to review



What help do we need?



- **Fundraising/Concessions**
 - We are only able to function as a program through fundraising and donations
- **Field Trip Chaperones**
 - 1 chaperone for every 10 students
- **Photography/Videography**
- **Equipment**
- **Uniforms**

Special for
Symphonic and
Concert Band
Only



Trip to see CHS Wind Ensemble Rehearsal

- Date TBA
- Free trip during school hours
 - Will be back for last lunch block
- Listen to the top CHS ensemble rehearse, meet the directors, and ask some questions about high school band



FSU PRISM Concert Trip

- **Tuesday, November 29, 2022**
 - 2 – 11 PM
- **\$60 per ticket**
 - 50 spots available
 - Begin selling in October/November
 - Once tickets open, they sell out quickly! They are first-come first-served until we run out.
- Eat dinner in FSU's dining hall, tour the FSU campus, and watch the **AWESOME** PRISM concert



Kaleidoscope

- **April 15th, 2023**
- Based on the FSU PRISM concert, Kaleidoscope gives the band opportunities to showcase **different music** and break out into smaller ensembles
- We perform at Crestview HS with the **Big Red Machine, Davidson MS, and Baker School!**
 - It is a terrific chance to connect with the Crestview band community



Other Important Information



▶ School Instrument Rental

The Instrument Rental Fee is **\$120** for the school year

- Can be paid in full or can be split into smaller payments if needed
- Before we can hand over the instrument, we need back the signed **School Instrument User Agreement form**
- If we have enough inventory, we try to allow students an in-school instrument and an at-home instrument for practicing
- The school instruments we have available for rental are:

Oboe

Bassoon

French
Horn

Euphonium

Tuba

Band T-Shirt

- These are required uniform shirts. They will be used for pep rallies, field trips, and some performances.
- Cost: **\$20**
- Sizes available:
 - **Youth L, Adult S, M, L, XL, 2XL, 3XL**
- Parents, you can absolutely buy a band shirt for yourself!
- Will have the important dates on the back again like last year
 - We really liked having the students sign each others' shirts on the last day of school. It makes a great keepsake later on!



Band Polo Shirt

- These are required uniform shirts. We will use these at football games and in select performances.
- Dry-fit polos
- I've ordered a restock of these based on sizes we used most of last year.
 - Last year, we had run out of smalls more quickly, so I ordered a bunch more.
- **\$20 each**
- Sizes: Youth L, Adult S, M, L, XL, 2XL, 3XL



Remind App



Symphonic Band:
@SRMSSB2223

Concert Band:
@SRMSCB2223

Jazz Band:
@SRMSJB2223

- This is my **NUMBER 1** communication tool because of its speed and short messaging.
 - We need every parent on here, and it is also recommended for students to join.
- Remind is a messaging platform to help teachers, parents, and students communicate with everyone at once
 - Remind is widely used in schools in the county and state as it keeps receipt of interactions for accountability